

Five Primary Factors



RETIREMENT – a history of rates

Year	Pension	Unfunded Liab.	Health	Total %
1999–2000	6.47%	0.59%	4.60%	11.66%
2000–2001	6.42%	0.19%	5.55%	12.16%
2001–2002	6.06%	0.06%	6.05%	12.17%
2002–2003	6.26%	0.68%	6.05%	12.99%
2003–2004	6.26%	0.68%	6.05%	12.99%
2004–2005	6.31%	2.01%	6.55%	14.87%
2005–2006	5.47%	4.32%	6.55%	16.34%
2006–2007	5.49%	5.70%	6.55%	17.74%
2007–2008	5.28%	4.89%	6.55%	16.72%
2008–2009	5.17%	4.56%	6.81%	16.54%
2009–2010	3.98%	6.15%	6.81%	16.94%
2010–2011 a	3.74%	8.42%	7.25%	19.41%
2010–2011 b	3.74%	8.42%	8.50%	20.66%
2011–2012 *	3.47%	12.49%	8.50%	24.46%
2012–2013 *	3.47%	15.15%	8.75%	27.37%

Retirement - The Trend

Retirement Rates



Retirement – Equating to \$\$

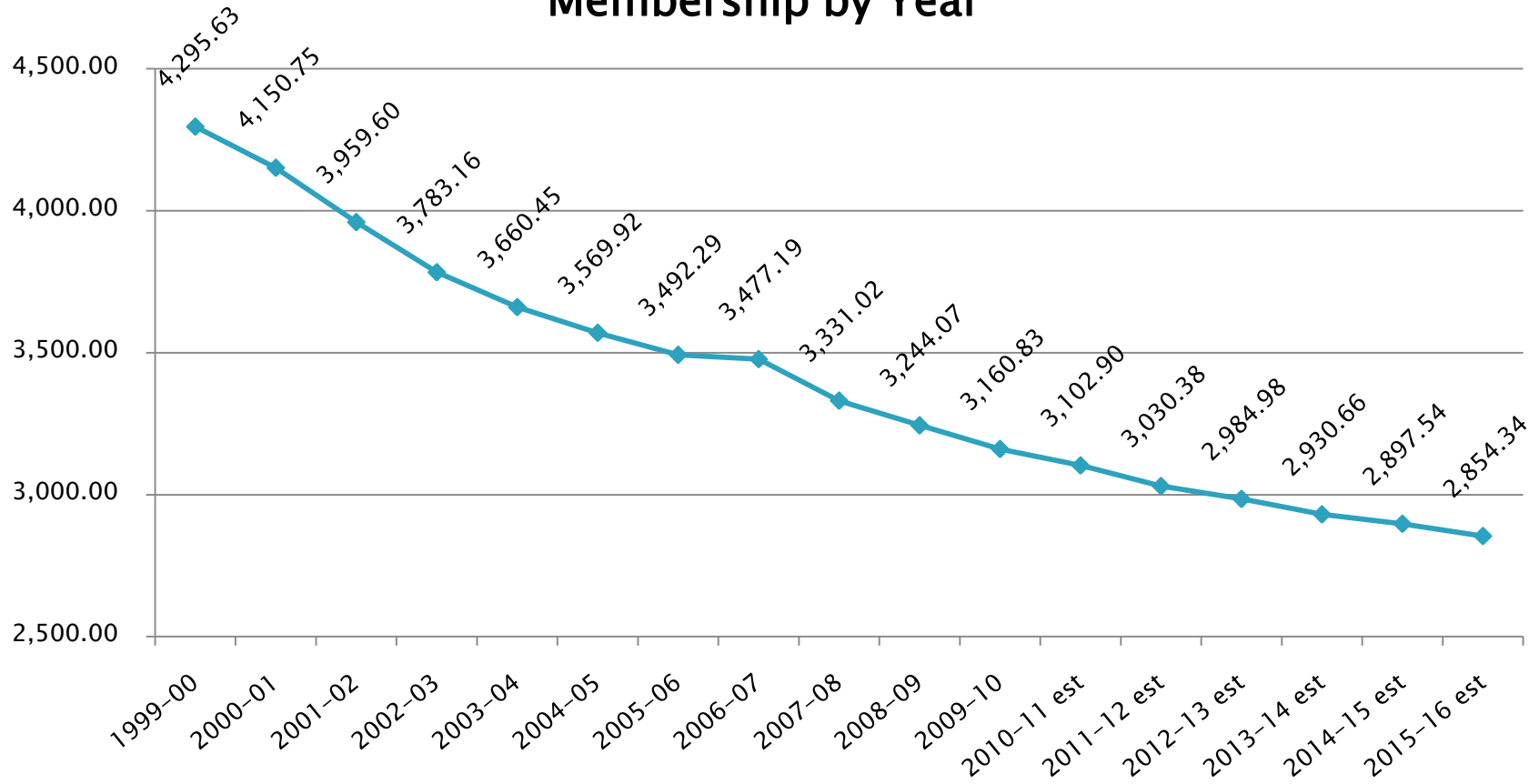
- ▶ Assume an average total salary/wage base of \$15,500,000 annually (amount projected for 2011–2012)
- ▶ In 1999–00, an employer would have paid \$1,807,300.00
- ▶ In 2010–2011, an employer will pay \$3,151,150.00
- ▶ Next Year's estimate will cost an increase of \$589,000.00
- ▶ Fiscal Year 2012–13 will cost an additional \$451,050.00
- ▶ 2 year total increase for retirement only \$1,040,050.00

ENROLLMENT – a history of counts

Year	Fall Count	Spring Count	Blended Count
1999–00	4271.76	4245.08	4295.63
2000–01	4119.30	4084.17	4150.75
2001–02	3918.07	3861.73	3959.60
2002–03	3756.97	3708.66	3783.16
2003–04	3644.38	3610.28	3660.45
2004–05	3556.47	3546.55	3569.92
2005–06	3474.20	3460.94	3492.29
2006–07	3482.61	3439.67	3477.19
2007–08	3294.80	3276.46	3331.02
2008–09	3233.27	3194.08	3244.07
2009–10	3149.75	3138.39	3160.83
2010–11 est	3091.07	3090.00	3102.90
2011–12 est	3010.50	2984.91	3030.38
2012–13 est	2985.00	2959.63	2984.98
2013–14 est	2921.00	2896.17	2930.66
2014–15 est	2898.00	2873.37	2897.54
2015–16 est	2848.00	2823.79	2854.34

Enrollment - The Trend

Membership by Year



Enrollment – Equating to \$\$

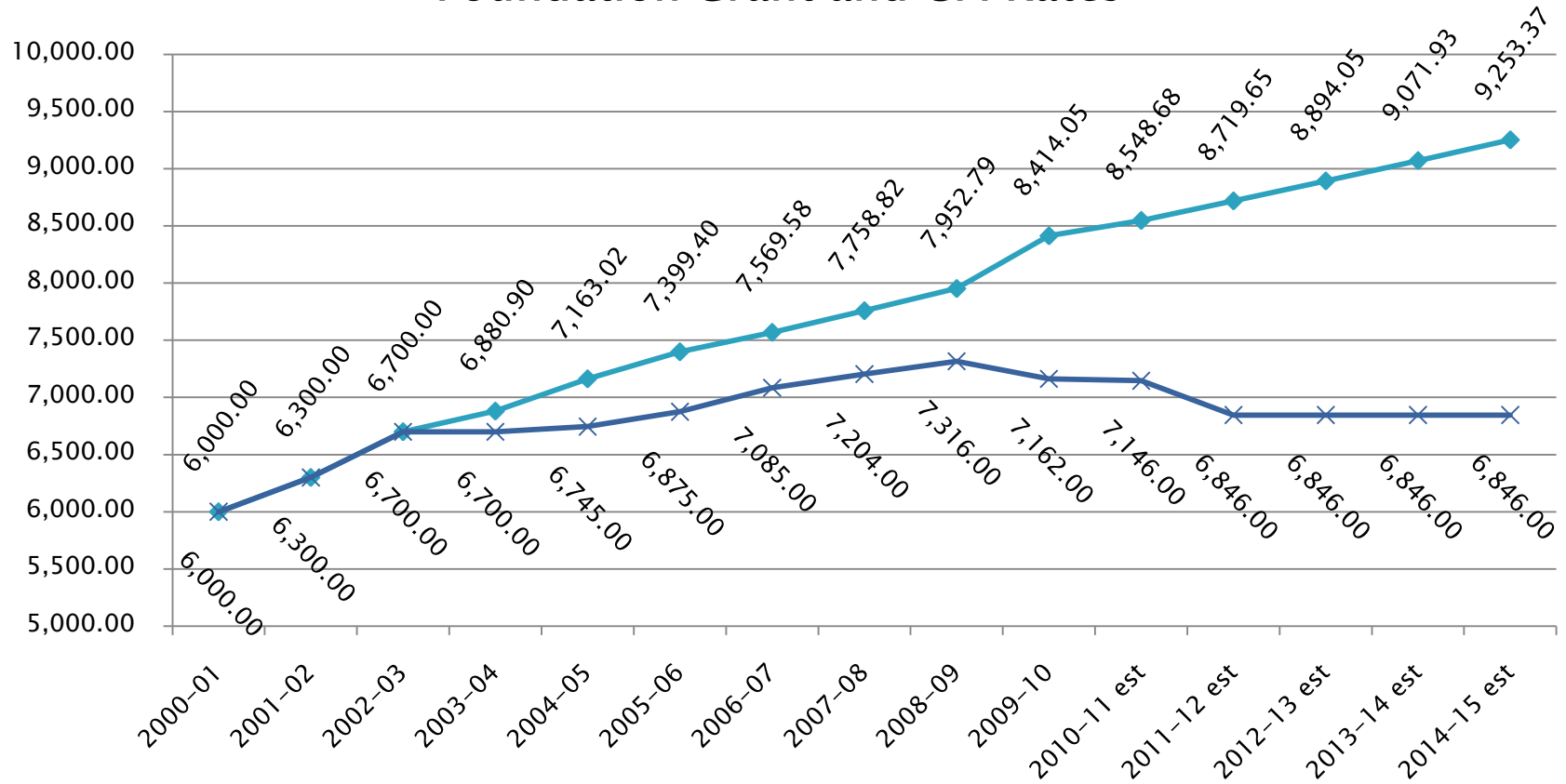
- ▶ Assume a static level of Foundation Allowance at \$5,700 (FY 2000)
- ▶ In 1999–2000, MAPS received \$ 24,485,091
- ▶ In 2010–2011, MAPS would receive \$ 17,686,530
 - \$ (6,798,561)
- ▶ In 2015–16, MAPS would receive \$ 16,269,748
 - \$ (1,416,782)
- ▶ Holding the variable of Foundation Allowance constant, we isolate the declining enrollment variable in dollars for this example.

FOUNDATION ALLOWANCE

Year	Amount per Pupil	CPI Factor	CPI Adjusted Amt
1999-00	5700.00	-	-
2000-01	6000.00	-	-
2001-02	6300.00	-	-
2002-03	6700.00	-	-
2003-04	6700.00	1.03	6880.90
2004-05	6745.00	1.04	7163.02
2005-06	6875.00	1.03	7399.40
2006-07	7085.00	1.02	7569.58
2007-08	7204.00	1.03	7758.82
2008-09	7316.00	1.03	7952.79
2009-10	7162.00	1.06	8414.05
2010-11 est	7146.00	1.02	8548.68
2011-12 est	6846.00	1.02	8719.65
2012-13 est	6846.00	1.02	8894.05
2013-14 est	6846.00	1.02	9071.93
2014-15 est	6846.00	1.02	9253.37

Foundation Grant – The Trend

Foundation Grant and CPI Rates



Foundation Allowance – Equating to \$\$

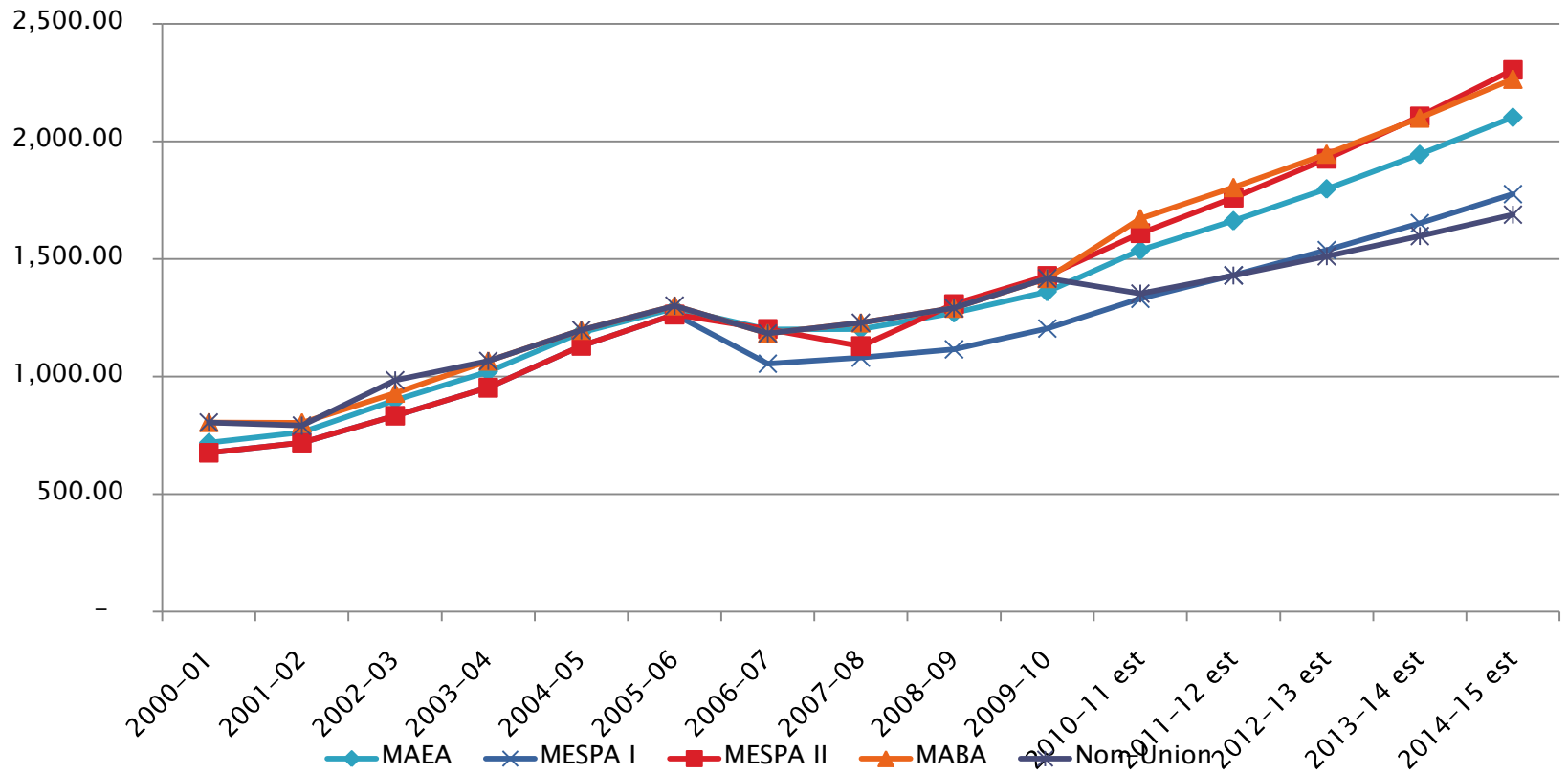
- ▶ Assume current year enrollment 3,102.90
- ▶ With current rate of State Aid \$ 22,173,323
- ▶ With adjusted State Aid (CPI) \$ 26,525,699
- ▶ An increase of \$ 4,352,376

INSURANCE PREMIUMS – a history of Pak Rates

Year	MAEA	MESPA I	MESPA II	MABA	NonUnion	Avg % Inc
2000-01	719.38	676.36	676.36	805.24	805.24	–
2001-02	763.77	718.80	718.80	803.27	791.24	3.08%
2002-03	899.34	833.10	833.10	929.75	984.69	18.02%
2003-04	1021.30	952.80	952.80	1066.15	1066.15	12.93%
2004-05	1187.88	1130.15	1130.15	1197.49	1197.49	15.50%
2005-06	1289.99	1263.85	1263.85	1301.37	1301.37	9.88%
2006-07	1200.82	1054.70	1202.47	1184.06	1184.06	–9.26%
2007-08	1202.41	1081.16	1129.55	1228.80	1228.80	0.77%
2008-09	1271.26	1115.55	1308.26	1291.15	1291.15	6.93%
2009-10	1361.22	1204.30	1428.61	1417.29	1417.29	8.78%
2010-11	1537.60	1331.51	1609.80	1672.18	1352.86	9.89%
2011-12 *	1662.76	1430.84	1760.80	1803.95	1429.97	7.79%
2012-13 *	1798.11	1537.58	1925.96	1946.10	1511.48	7.80%
2013-14 *	1944.48	1652.28	2106.62	2099.45	1597.64	7.81%
2014-15 *	2102.76	1775.55	2304.22	2254.89	1688.70	7.83%

Insurance Rates – The Trend

Pak Rates by Group



Insurance Premiums – \$\$

- ▶ Comparing annual costs for our largest staff group –
- ▶ The avg annual insurance premium per tchr 4 years ago was **14,410**
- ▶ The avg annual insurance premium per teacher this year is **18,451**
- ▶ Assuming a staff of 200, this premium increase equates to **808,272**

Staffing

Job Class	2004-05	2005-06	2006-07	2007-08	2008-09	2009-10
Admin	10	10	10	10	9	6
Principals	10	10	10	10	9	9
Teachers	201	200	210	205	200	197
Aides	49	70	70	50	45	62
Secretaries	18	17	18	18	17	19
Transport	23	22	22	22	22	25
Maint- Cust	23	21	21	21	20	18
Food Serv	17	17	18	18	18	18
Other	24	24	30	30	30	32

Salaries

Class	2004-05	2005-06	2006-07	2007-08	2008-09	2009-10	2010-11 *
Admin	1,334,616	1,409,612	1,466,014	1,472,613	1,512,233	1,460,071	1,381,053
Prof Ed	10,758,208	10,773,481	11,033,894	11,562,878	11,617,896	11,599,986	10,926,746
Prof Busi	115,409	116,728	120,372	122,152	125,235	55,618	50,785
Prof Oth	344,251	347,735	350,418	339,269	363,001	316,136	288,473
Tech	481,518	451,061	430,597	351,225	358,920	365,356	369,413
Ops	2,598,983	2,585,018	2,568,742	2,581,810	2,577,330	2,502,939	2,455,602
Temp	314,045	363,030	328,545	312,398	311,702	258,920	311,394
OT	42,683	42,265	43,139	44,339	42,166	38,624	41,650
TOTAL	15,989,713	16,088,930	16,341,721	16,786,684	16,908,483	16,597,650	15,825,116

Assumptions for 2011–2012

- ▶ Retirement Rate 24.46%
 - ▶ Enrollment – 81 students projected
 - ▶ Insurance 7.79%
 - ▶ State Aid \$6,846 (less \$470 pp)
 - ▶ Staffing/Salaries to be determined
- 