

Marquette Area Public Schools
BOARD OF EDUCATION
1201 W. Fair Avenue
Marquette, MI 49855
Telephone 906-225-4200
WEBSITE www.mapsnet.org

Work Session
Tuesday, November 3, 2009, 5:15 p.m.
Marquette Senior High School Library
1203 W. Fair Avenue

MINUTES

- **Call to Order**

A Work Session of the Marquette Area Public Schools Board of Education was held Tuesday, November 3, 2009, in the Library of the Marquette Senior High School. The meeting was called to order by Board President **Kellie Holmstrom** at 5:15 p.m.

- **Roll Call**

Members Present

Kellie A. Holmstrom, DVM	President
Alan Hawker	Vice President
Mark Smith	Secretary-Treasurer
Scott Brogan	Trustee
Norman Gruber	Trustee
Tony Retaskie	Trustee
Laura Songer	Trustee

Central Administration Present

Jon Hartwig	Superintendent
Deborah Veiht	Assistant Superintendent
Jackie Winkowski	Administrative Assistant / Recording Secretary

Others Present

MAPS educators and other employees, parents and other citizens, Superior Productions sound technician (about 40 people total)

- **Approve Agenda**

A motion was made by Tony Retaskie and seconded by Scott Brogan to approve the agenda as presented. Motion carried, 7-0.

- **Approve Minutes of October 26, 2009, Rescheduled Regular Meeting**

A motion was made by Al Hawker and seconded by Norm Gruber to approve the minutes of the October 26, 2009, rescheduled regular meeting as presented. Motion carried, 7-0.

- **Board Work Session on Grade Alignment**

Dr. Kellie Holmstrom explained the purpose of the work session: To discuss grade alignment, the 2009 and Beyond Alignment Committee's recommendation, and the Superintendent's recommendation. She advised that large group discussion this evening would be followed by breakout smaller group discussion sessions in classrooms adjacent to the Library, with one or two Board members being part of each group.

Jon Hartwig:

- Reported on the composition and recommendation of the 2009 and Beyond Alignment Committee and expressed appreciation to the committee members.
- Referred to an informational packet (copy attached) distributed this evening.
- Mentioned the other speakers this evening who would report on grade alignment.
- Reported on the MASB-MSBO-MASA effort, "SOS" (Save our Students, Schools, State); a rally is set for the morning of November 10 on the steps of the State Capitol (see attached). Citizens can join in the effort. Mr. Hartwig commented on the State school funding crisis and the need for a long-term solution.
- Noted that MAPS' fund balance has been decreasing, with expenditures greater than revenues, and it has been forecasted that this trend will continue.
- Advised that numerous documents pertaining to the grade alignment study, including the 2009 and Beyond Alignment Committee's recommendation and his recommendation (copies attached), have been posted on MAPS' website.

Graveraet Principal Tamra Bott spoke on behalf of the 2009 and Beyond Alignment Committee, explained the process, and reported on the committee's recommendation for a K-4, 5-8, 9-12 configuration. She reported there was a 78% consensus by the committee to move forward.

Jon Hartwig explained his recommendation for K-4, 5-8, and 9-12, beginning with the 2009-10 school year, in accordance with the 2009 and Beyond Alignment Committee's recommendation. He advised it is based on research, maintaining three educational levels, and facility design. Mr. Hartwig mentioned that oversized copies of the Graveraet and Bothwell floor plans (copies attached) were on display in the Library.

Bothwell Principal Bill Saunders and Assistant Principal Dan Gannon commented regarding the concept of Bothwell as a grades 5-8 school and explained how the building could accommodate those grades (reference attached).

At 6:15 p.m. the attendees divided into four smaller groups, using rooms 206, 207, 230, and 231 adjacent to the MSHS Library.

Dr. Holmstrom reconvened the large-group meeting in the Library at 7:10 p.m. Norm Gruber left the meeting due to another commitment.

Highlights of small-group topics / questions appear below.

Summary presented by Scott Brogan:

- How did the 2009 and Beyond Alignment Committee arrive at its recommendation?
- How important is district-wide grade-level equity?
- Could MAPS have one K-5 building, alleviating a strain on Bothwell?
- What about student socialization? How does placing grade 5 with 6-7-8 compare to placing grade 8 with 9-10-11-12?
- Concerns were expressed about potential grade assignment on Bothwell's 2nd floor. What options exist?

Summary presented by Laura Songer:

- Could MAPS have two K-4s and one K-5 and make a gradual transition?
- A decision should be made ASAP so that families and staff can plan.
- Concern about the location of 5th grade, if assigned to Bothwell.
- Concerns / questions about potential grade placement on BMS 2nd floor.
- Locker availability at Bothwell?
- 5th graders need a playground; students in grades 6-7-8 like to play, too, but may not admit it.

Summary presented by Tony Retaskie:

- What are the true savings of moving grade 5 to BMS?
- With MAPS' continued operation of the Kaufman Auditorium, what would the savings be if Graveraet were no longer a school?
- What would the outlook be for Graveraet? Could a conference center be considered?
- What is the future for MAPS' Alternative Education?
- The 2009 and Beyond Alignment Committee was comprised mostly of staff.
- What are the student populations which would be housed at BMS, as a 5-8 building, in 2010-11, 2011-12, 2012-13?
- What is the capacity of BMS today? It formerly housed 900-1,000 students, but there have been changes.
- What number of students would be in each class?

Mark Smith added, on behalf of his group:

- Financial issues.
- Is this the time to make a change? What about lead time?
- How detailed a plan would the Board see and approve?

Alan Hawker added, on behalf of his group:

- Discussion on the budget / reductions in State funding – citizens should contact their legislators.
- What would the savings be to close Graveraet?
- Questions about Graveraet's future.

Following the small group summaries, there was discussion on:

- The concept of Bothwell as a 5-8 building.
- Bothwell computer labs and PE class scheduling.
- 4th grade teachers, now in different buildings, cannot provide the same support for each other as when they were housed together.
- MSHS's present senior class: About half attended Bothwell as 5th graders, the other half were in K-5 settings. The group that attended BMS has an average 2.7 GPA, and those at K-5s average 2.8.
- Possible future use of Graveraet / consideration of the building as an alternative high school-middle school site.
- Whether or not the Board should hold another work session on grade alignment; the importance of the Board making a decision soon. It was suggested that the next grade realignment work session take place after the budget work session.
- The Board's decision would be regarding grade configuration, not on smaller details.
- Will the Board be presented with alternatives to consider?
- Scott Brogan reported that if there were enough building space, the 2009 and Beyond Alignment Committee would have recommended a K-5, 6-8, 9-12 alignment. He mentioned that as a parent, that would have been his preference.
- Jon Hartwig commented on the concept of Graveraet as a large K-5 school. He commented on the building's design with respect to housing lower grades / younger children and on the extent of renovation and room expansion which would be necessary to accommodate lower grades. He mentioned possible other, perhaps financially-feasible, uses for Graveraet.

- **Comments from the Public**

Missy Skendzel, parent, expressed concern about realignment, large class sizes, and students leaving the district.

Lisa Pohlman commented regarding removing one of her two children from MAPS.

Julie Hoffman stated she is transferring her children from MAPS to North Star.

Millie White, parent, expressed satisfaction with Bothwell but said we need to know what grades 5-8 there would look like; she asked about funds possibly available to restore historic Graveraet.

Jake Guter, parent, expressed concern about crowding at Bothwell with grades 5-8 housed there. He suggested that if an alignment change is being considered, we should first ensure there would be substantial savings.

- **Board Member Comments**

Board members' comments covered the following topics:

- Financial issues will cause education as we know it to change.
- Parents who are considering changing schools should consider what's really best for their child.
- A decision on grade alignment should be made as soon as possible.
- Compare Vandeenboom's present utilization to what could happen for Graveraet.
- With excellent teachers, children will be fine regardless of the building in which they're educated
- Some districts have cut arts and sports; MAPS has not.
- Concern about State funding reductions, \$165 per student and possibly another reduction of \$127 per student this year, the largest ever.
- Contacting legislators.
- Appreciation to meeting attendees.
- More time should be taken to decide on grade alignment; gather further information first, review different scenarios.

Jon Hartwig advised he will provide responses to the questions presented.

- **Board President's Comments**

Kellie Holmstrom requested that **Jackie Winkowski** assist in scheduling another work session, in December, on grade alignment.

- **Adjourn**

A motion was made by Al Hawker and seconded by Mark Smith to adjourn the meeting. Motion carried. 6-0; adjourned at 8:10 p.m.

Kellie Holmstrom
President

Mark Smith
Secretary-Treasurer

Jackie Winkowski
Recording Secretary

Attachments

S O S

Save our Students, Schools, State

Recent events in Lansing have put students, schools and our state in danger. Funding for schools and other essential services are being slashed. SOS was established by the Michigan Association of School Administrators, the Michigan Association of School Boards and the Michigan School Business Officials as a vehicle to assist schools in dealing with the funding crisis and create solutions from within the school community.

The Detroit Free Press reported that House Speaker Andy Dillon had counted on public pressure to force the legislature to restore cuts to schools. They quoted Dillon as saying,

“...the pressure is not building. The problem that it’s causing is that people assume they (the schools) can accept these cuts. It’s business as usual, but these cuts are real.”

SOS – Save Our Students, Schools, State

Who: Community Members and School District Personnel

What: Rally on the Steps of the State Capitol, and subsequent meetings with legislators

When: Tuesday, November 10, 2009, 10:00 a.m.

How: Contingents from all public school communities rallying to send a clear message:

1. Restore the funding cuts to Michigan public schools for 2009-2010
2. Work in the future to develop a long-term, sustainable funding solution for Michigan’s public schools

Visit the effort’s website at: www.SOSMichigan.org

**MARQUETTE AREA PUBLIC SCHOOLS
GRAVERAET INTERMEDIATE SCHOOL**

611 N. Front Street
Marquette, Michigan 49855

TAMRA A. BOTT
Principal

Phone (906)225-4302
FAX (906)225-4312

TO: Superintendent, Jon Hartwig
FROM: Tamra Bott, Chairperson 2009 and Beyond Alignment Committee
DATE: October 15, 2009
RE: Grade Alignment Recommendation

A committee comprised of parents, teachers, building administrators, central office administrators, auxiliary services personnel and the Board of Education was formed in June, 2009 for the purpose of reviewing grade alignment. The committee met seven times as follows: July 1, 7, 15, 29, August 19, September 16, and October 9. This committee was charged with making a recommendation to the Superintendent regarding alignment that would continue to support quality education programming. The committee understood from the outset that it was a recommending body with the final decision made by the Board of Education.

Each committee member reviewed literature on grade alignment from a variety of sources. After a review of the literature, it was found that no specific grade alignment has been proven to increase or decrease student achievement. It was found that quality teaching in any configuration is the largest determining factor in promoting student achievement. These findings were consistent with the findings of research conducted by a MAPS alignment committee which met in 2005.

The committee developed twelve (12) different grade alignment possibilities. Each alignment was analyzed both in small groups, as well as whole group, with respect to strengths, problems, opportunities and threats (threats being conditions that would prevent a particular alignment from being successful).

On Friday, October 9, the committee worked for five hours and narrowed alignment ideas to two main options:

1. K-5, 6-8, 9-12-the committee felt this scenario was feasible, if Graveraet was considered as a possibility for a K-5 school
2. K-4, 5-8, 9-12- the committee was in support of this scenario, if K-5 remained self-contained

The committee agreed consensus of 78% would move the recommendation forward. Therefore, the 2009 and Beyond Alignment Committee recommendation is **Option 2: K-4, 5-8, 9-12.**

The 2009 and Beyond Alignment Committee has concluded its task. Thank you for the opportunity to provide input into the recommendation for the future alignment of MAPS.

Tamra A. Bott 10/15/09

MARQUETTE AREA PUBLIC SCHOOLS

1201 WEST FAIR AVENUE
MARQUETTE, MICHIGAN 49855
TELEPHONE (906) 225-4400
FAX (906) 225-5340
WEBSITE www.mapsnet.org

Jon Hartwig, Superintendent
Deborah L. Veiht, Assistant Superintendent

Tim Yeadon, Assistant Superintendent for Finance

To: Board of Education Members
From: Jon Hartwig, Superintendent of Schools
Date: October 29, 2009
Subject: Attached Recommendation – Grade Alignment

Due to loss of enrollment and diminishing resources, Marquette Area Public Schools has previously addressed K-12 grade alignment. As recently as 2003, Graveraet Middle School was closed and reconfigured to serve intermediate level students. Elementary schools ended service as K-5 buildings and began focusing resources on K-3 children. Though portions of that realignment effort met with resistance, Graveraet's 4-5 Intermediate School proved successful. Michigan's educational funding mechanism has failed to match demand. Our school system must again address financial and educational challenges, including closing an additional school building.

Discussions throughout 2008-2009 indicated need for additional research and discussion prior to Board consideration of recommendations to reduce our number of facilities. That review occurred following appointment of a study committee. That group's recommendations are attached to this memo and reflect the following:

- Grade alignment for Marquette Area Public Schools will include a K-4, 5-8, and 9-12 configuration.

The committee's recommendation was finalized on October 9 and forwarded to the Superintendent on October 15. Following careful review of the review group's findings, students' best interests will be served through concurrence with the recommendation. That support is based on the following:

Research

Research supports effective programs and practices as determinants of quality schools. Numerous alignments have merit and all rely on two factors for success: effective teachers and supportive leaders.

Maintenance of Educational Levels

Educators' effectiveness is enhanced through thoughtful division of effort. Elementary students thrive within environments supporting development of basic skills. Self-contained classrooms protect precious learning opportunities. Middle schools transcend single-purpose school design and simultaneously address needs of rapidly-developing children. Effective content-oriented high school programs must prepare youngsters in unique ways beyond those applicable to other levels of education.

K-4 Elementary - Through recommending continuation of K-4 elementary schools, MAPS grade alignment committee respects the nature of young learners. Our school district has made great strides toward implementing effective K-4 instructional strategies. Maintaining these efforts is essential.

5-8 Middle School - The committee recommends that Bothwell Middle School be expanded to include grades 5-8. That grouping is effective and educationally sound. Numerous Michigan school districts, including Marquette's Father Marquette Middle School, choose 5-8 as their middle level alignment. This grade alignment allows our system to maintain distinctive middle-level programs designed to meet specific needs of emerging adolescent children.

Additionally, a four-grade middle school reduces the number of transitions students must experience prior to graduation. Finally, we have capacity, resources and experience necessary to continue providing exemplary middle level education. Resources have been invested in development of targeted programs and practices which should continue.

9-12 High School - By recommending that Marquette Senior High School continue as a 9-12 program, the alignment committee recognizes efforts underway to reform our district's secondary program to meet new challenges. Calls for reforming high school education are clear. Marquette has responded through development of smaller learning communities, advisor/advisee programs, clarifying of core content expectations, effective staff development, implementation of a seven period day, enhanced course offerings, Freshmen Academy and other initiatives. Maintaining focus on 9-12 improve odds of truly reforming the high school experience for area youth.

Facility Design

The committee's recommendation best utilizes current MAPS facilities without requiring expensive redesign. MAPS K-4 buildings currently meet educational needs of children. Classrooms, hallways, single level design and related instructional areas are appropriately-sized. Graveraet is not appropriately-designed for young children and would present the community with significant challenges if that building were to be utilized as a K-5 structure. Secondly, the committee's recommendation expands Bothwell to include fifth grade. Because of that school's relative size, flexibility and enhancements, a broad range of programming options will support excellent experiences for emerging adolescents. Fifth grade classrooms can be self-contained, per committee recommendations. Exploratory class opportunities, enhanced by Bothwell's design, are unlimited and may include technology, computers, orchestra, band, chorus, Read 180, physical education and other experiences appropriate for middle level youngsters. Finally, Marquette Senior High School's design, including effective use of pod areas, best meets needs of secondary level students. Our district's focus on high school reform is enhanced by maintaining grades 9-12 in that building.

Summary

Winter and spring 2009 grade alignment discussions indicated need for additional research and discussion. Such review occurred through appointment of a committee. That group supports a realignment plan which supports K-4, 5-8 and 9-12. The committee's recommendation reduces students' transitions, maximizes efficient use of teacher and administrator talent, promotes clarity of mission, expends resources in a responsible manner and focuses attention on educational and safety-related needs of children.

On behalf of our community, it is important to thank community and staff members who served on the 2009 and Beyond Alignment Committee. The group tackled a complex issue, thoroughly examined options and recommended a course of action that supports exemplary education.

Marquette Area Public Schools

2009-2010 School Year

School Building	Full-Size Classrooms Used for Instruction (includes special education)	Full-sized Classrooms for Specials (Art, Movement Matters, Music, Computers)	Full-sized Classrooms Currently Used for Non-instructional (Headstart, KinderCare)	Percent Currently Used for Direct Instruction	Comments
Cherry Creek	14	3	3	85% (17/20)	Cherry Creek Elementary houses K-4. The facility is close to capacity with current enrollment. Three classrooms are available for expansion.
Sandy Knoll	16	4	2	90% (20/22)	Sandy Knoll houses K-4, Functional Skills Program Elementary-aged students and ECDD (pre-school impaired). The facility is close to capacity with current enrollment. Two classrooms are available for expansion.
Superior Hills	14	3	0	100% (17/17)	Superior Hills houses K-4 students. All classrooms are utilized. No rooms are available for expansion.
Graveraet	8	4	11	52% (12/23)	Graveraet houses grade 5. Approximately one-half of available classrooms are utilized, with 11 classrooms available for expansion.
Totals	52	14	16	NA	Upcoming fifth grade section numbers will range from 7 to 9. Space available within current K-4 school buildings (CC, SK and SH) cannot accommodate fifth grade.

If Bothwell were to become a 5-8 middle school, how might it look?

Grade 5 - Housed on first floor of BMS

- Self-contained classrooms 103, 104, 105, 107, 108, 109A, 109B, 113
- Elective offerings in underutilized space - Art, Computers, P.E., Music - Band or Orchestra
- 30 minute self-contained lunch with recess
- Curriculum and schedule attained collaboratively that best meets the needs of the student

Grade 6 - Housed on second floor of BMS

- Self-contained classrooms 201C, 201D, 203C, 203D, 204C, 204D, 205C, 205D
- Elective offerings could continue as is
- Lunch could continue as is
- Curriculum and schedule could continue as is

Grade 7 - Housed on second floor of BMS

- Could utilize current teaming concept combined with a shared departmentalized room schedule 201A, 201B, 202A, 202B, 203A, 203B, 204A, 204B, 205A, 205B, 206A, 206B
- Elective offerings could continue as is
- Lunch could continue as is
- Curriculum and schedule could continue as is

Grade 8 - Housed on second floor of BMS

- Could utilize current teaming concept combined with a shared departmentalized room schedule 201A, 201B, 202A, 202B, 203A, 203B, 204A, 204B, 205A, 205B, 206A, 206B
- Elective offerings could continue as is
- Lunch could continue as is
- Curriculum and schedule could continue as is

Special Education - Housed on first and second floors

- Resource room for pullout students 202C, 110A, 110B

Computer Labs - Housed on first and second floors - 90+ computers for class use

- 112A, Library, Library CD

MARQUETTE AREA PUBLIC SCHOOLS

2009-10 Projected Class Sizes

Updated: 09-30-09 [count day-preliminary]

KINDERGARTEN		
BLDG.	SECTION	Class Size
CC	1	20
	2	21
	3	21
	4	17
	CC TOTAL	79
SK	1	22
	2	20
	3	22
	SK TOTAL	64
SH	1	21
	2	19
	3	20
	4	21
	SH TOTAL	81
GRAND TOTAL		224

GRADE 1		
BLDG.	SECTION	Class Size
CC	1	20
	2	20
	3	19
	CC TOTAL	59
SK	1	25
	2	26
	3	24
	SK TOTAL	75
SH	1	25
	2	24
	3	25
	SH TOTAL	74
GRAND TOTAL		208

GRADE 2		
BLDG.	SECTION	Class Size
CC	1	23
	2	24
	3	22
	CC TOTAL	69
SK	1	21
	2	20
	3	17
	SK TOTAL	58
SH	1	23
	2	24
	3	23
	SH TOTAL	70
GRAND TOTAL		197

Class Size Reduction - Title Ila

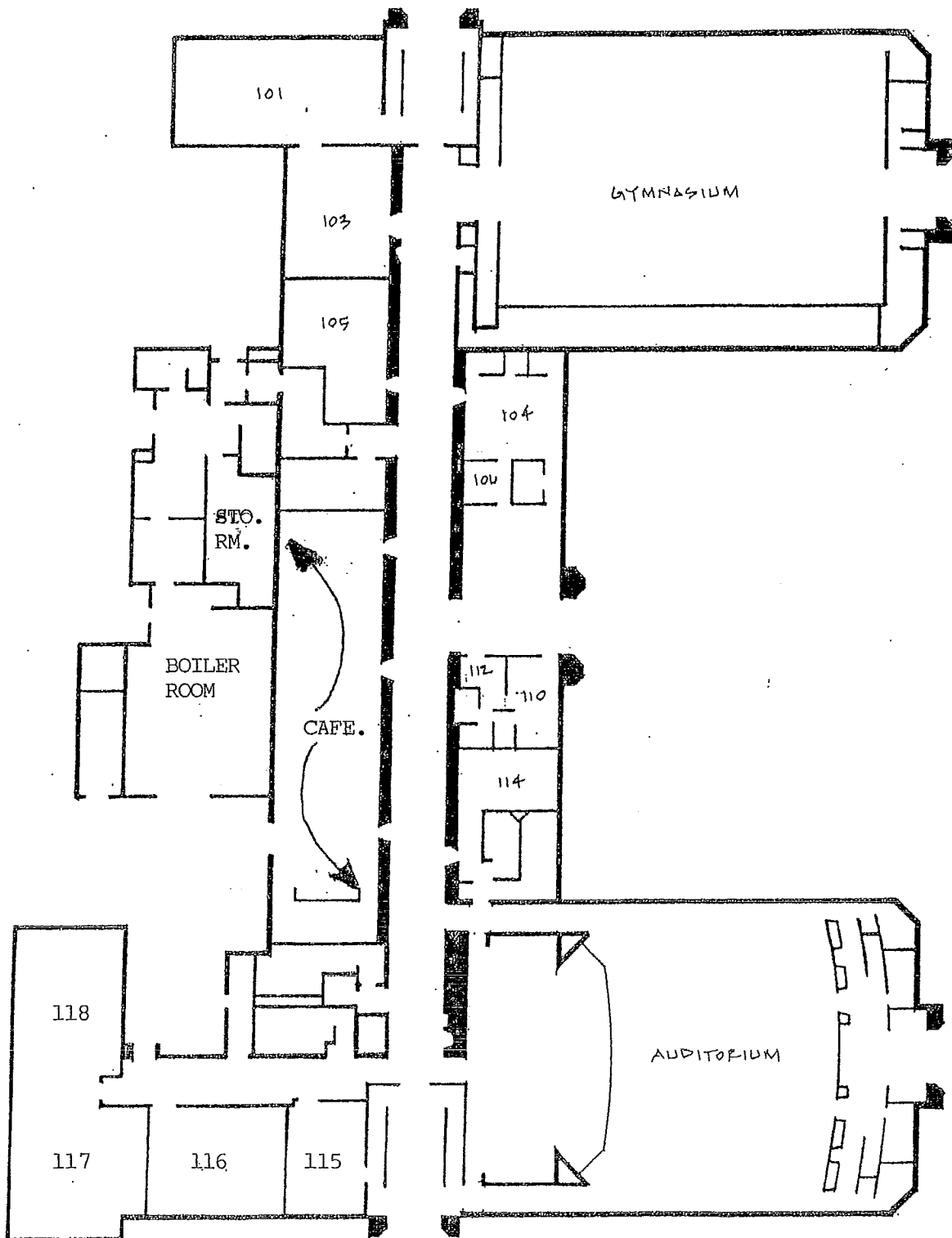
GRADE 3		
BLDG.	SECTION	Class Size
CC	1	19
	2	22
	3	20
	4	20
	CC TOTAL	81
SK	1	27
	2	27
	3	27
	SK TOTAL	81
SH	1	23
	2	25
	3	23
	SH TOTAL	71
GRAND TOTAL		233

GRADE 4		
BLDG.	SECTION	Class Size
CC	1	28
	2	27
	CC TOTAL	55
SK	1	27
	2	24
	3	26
	SK TOTAL	77
SH	1	21
	2	24
	3	25
	SH TOTAL	70
GRAND TOTAL		202

GRADE 5		
BLDG.	SECTION	Class Size
GIS	1	29
	2	28
	3	28
	4	29
	5	28
	6	28
	7	29
TOTAL		199

TEN YEAR STUDENT FORECAST FOR DISTRICT

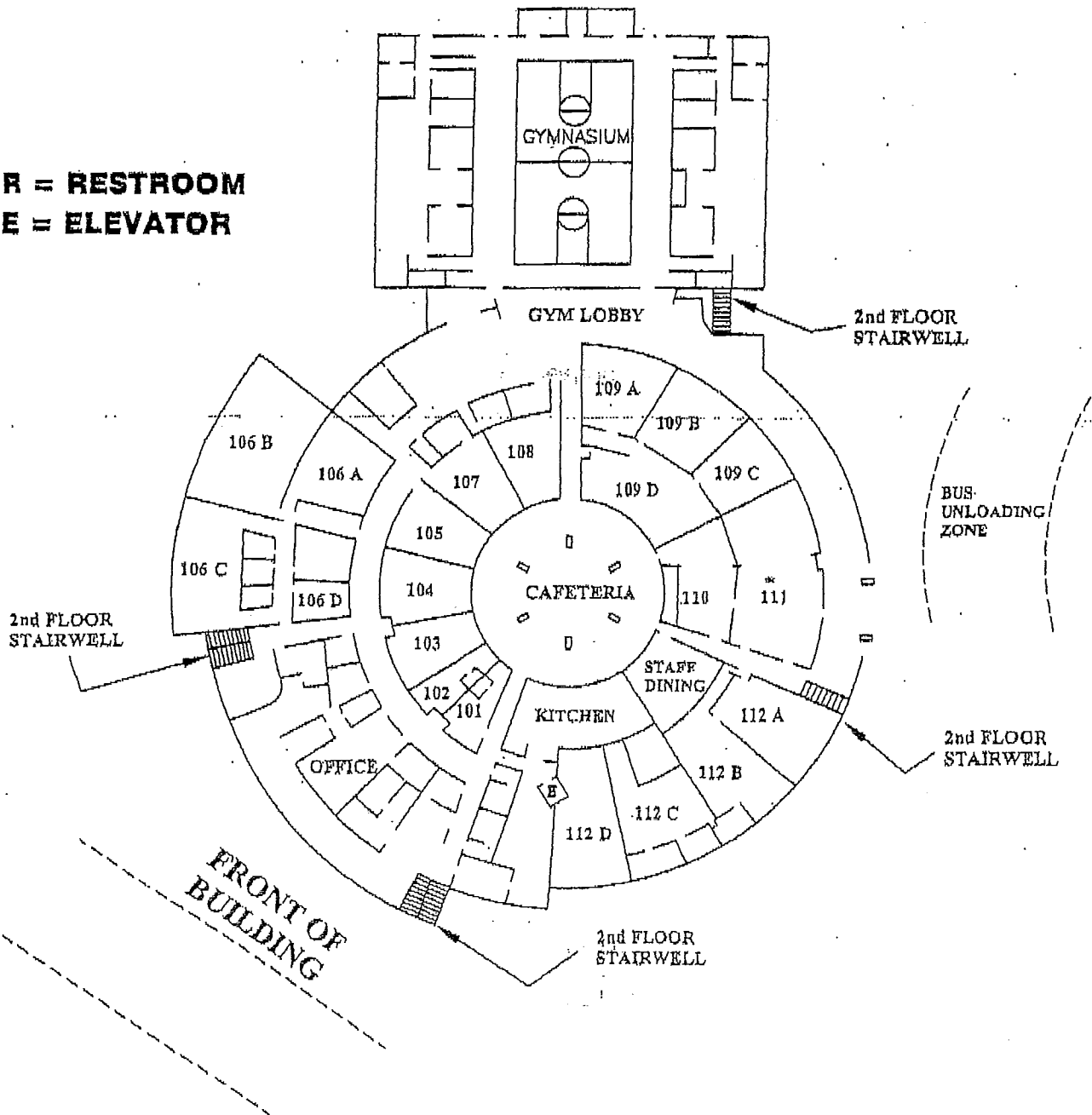
STUDENTS	School Year Beginning									
	09	10	11	12	13	14	15	16	17	18
"K-5"	1295	1286	1276	1230	1224	1211	1203	1195	1191	1187
"6-8"	716	702	647	671	663	665	623	621	611	606
"9-12"	1039	1031	1054	1054	1032	1011	996	974	971	966
Subtotal	3050	3019	2977	2955	2919	2887	2822	2790	2773	2759
Special Ed.	61	64	67	70	72	74	76	77	78	79
Alternative Ed.	65	61	63	66	68	69	71	72	73	73
TOTAL	3176	3144	3107	3091	3059	3030	2969	2939	2924	2911



GRAEBER INTERMEDIATE SCHOOL FIRST FLOOR
(NO SCALE)

BOTHWELL MIDDLE SCHOOL FIRST FLOOR MAP

R = RESTROOM
E = ELEVATOR



BOTHWELL MIDDLE SCHOOL SECOND FLOOR MAP

R = RESTROOM
E = ELEVATOR

